

- Construction** Brass Body CuZn40Pb2, EN CW617N (equivalent to BS CZ122)
- Finishes** Chrome Plated
- Product Type** Contemporary
- Mode** Single mode, Aerator Induction
- Fitting** G1/2"
- Guarantee** 10 years against manufacturing faults (3 Years on Serviceable Parts).
- Additional Information** Rubber Nozzle

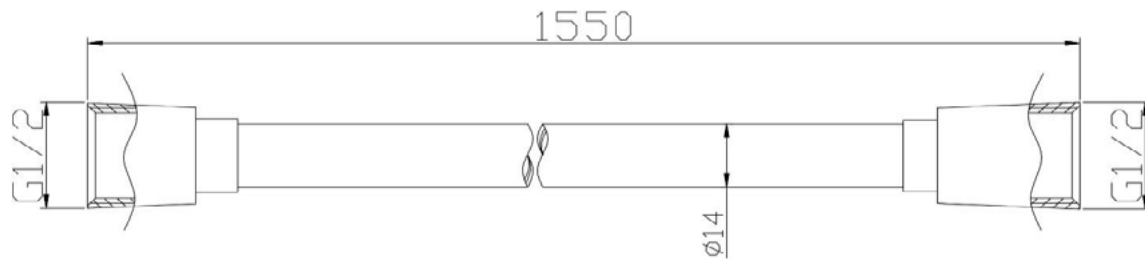
Flow Rates (Litres per minute)

System Pressure	0.1 Bar	0.2 Bar	0.3 Bar	0.5 Bar	1.0 Bar	1.5 Bar	2.0 Bar	3.0 Bar	4.0 Bar	5.0 Bar
	3.5	4.6	-	7.0	9.7	-	12.4	14.1	-	17.6

The information contained on this page was correct at date of issue. Fitting dimensions are provided as a guide only. Some variation may occur due to manufacturing tolerances. We pursue a policy of continuing improvement in design and performance of our products and so reserve the right to change specifications without prior notice.



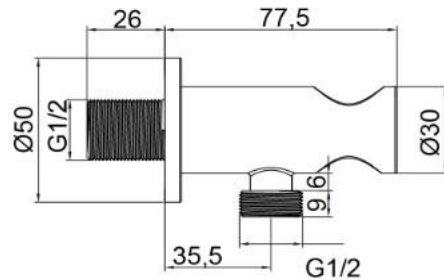
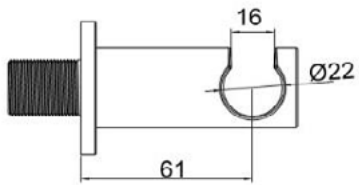
Construction	EDPM
Finishes	Chrome
Product Type	Contemporary
Plumbing Systems	Suitable for all plumbing systems
Certification	Manufactured to comply with CE
Additional Information	Cone to cone connection



The information contained on this page was correct at date of issue. Fitting dimensions are provided as a guide only. Some variation may occur due to manufacturing tolerances. We pursue a policy of continuing improvement in design and performance of our products and so reserve the right to change specifications without prior notice.



Construction	Brass Body (CuZn40Pb18)
Finishes	Chrome plated to BS EN 248
Product Type	Contemporary
Plumbing Systems	Suitable for all plumbing systems
Fitting	G1/2" BSP
Guarantee	10 years against manufacturing faults (3 Years on Serviceable Parts).
 Additional Information	 Integrated wall elbow



The information contained on this page was correct at date of issue. Fitting dimensions are provided as a guide only. Some variation may occur due to manufacturing tolerances. We pursue a policy of continuing improvement in design and performance of our products and so reserve the right to change specifications without prior notice.